

# JADE HILLS

VILLAS



*J.H.*

JADE HILLS

FLOOR  
PLANS

*J.H.*

FLOOR PLANS

# Golf Villa-GV73

Total Area: 714 sqm



# FLOOR PLANS

## Golf Villa-GV73

Ground Area: 422 sqm



32 - 69

J.H.

# FLOOR PLANS

## Golf Villa-GV73

Basement Area: 292 sqm



33 - 69

J.H.

FLOOR PLANS

# Golf Villa-GV51

Total Area: 565 sqm



FLOOR PLANS

# Golf Villa-GV51

Ground Area: 330 sqm



35 - 69

J.H.

FLOOR PLANS

# Golf Villa-GV51

Basement Area: 235 sqm

36 - 69



J.H.

FLOOR PLANS

# Villa-V43

Total Area: 423 m<sup>2</sup> + 75 m<sup>2</sup> Roof Terrace



37 - 69

J.H.

FLOOR PLANS

# Villa-V43

Total Area: 423 m<sup>2</sup> + 75 m<sup>2</sup> Roof Terrace



38 - 69

J.H.

# FLOOR PLANS

## Villa-V43

Ground Area: 174 sqm



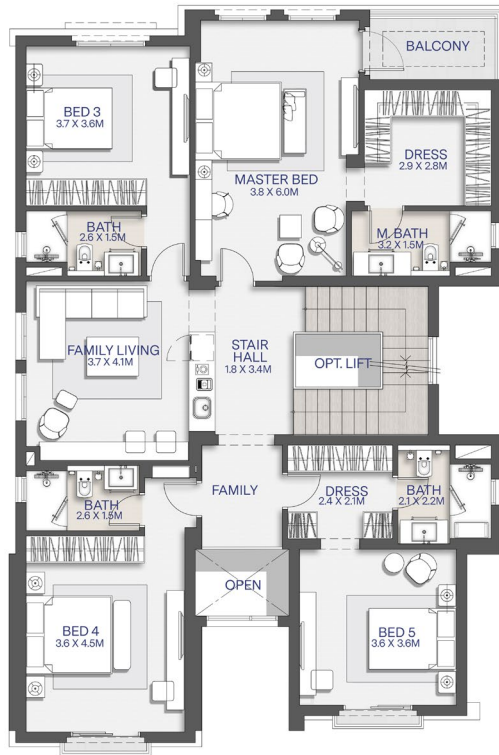
39 - 69

J.H.

FLOOR PLANS

# Villa-V43

First Area: 168 sqm

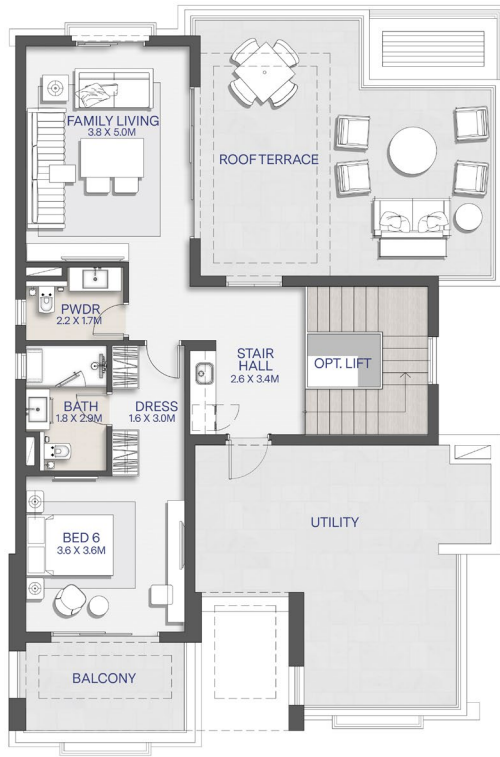


# FLOOR PLANS

## Villa-V43

Penthouse: 81 sqm

Roof Terrace: 75 sqm



FLOOR PLANS

# Villa-V36

Total Area: 356 m<sup>2</sup> + 67 m<sup>2</sup> Roof Terrace



42 - 69

J.H.

FLOOR PLANS

# Villa-V36

Total Area: 356 m<sup>2</sup> + 67 m<sup>2</sup> Roof Terrace



43 - 69

J.H.

# FLOOR PLANS

## Villa-V36

Ground Area: 145 sqm



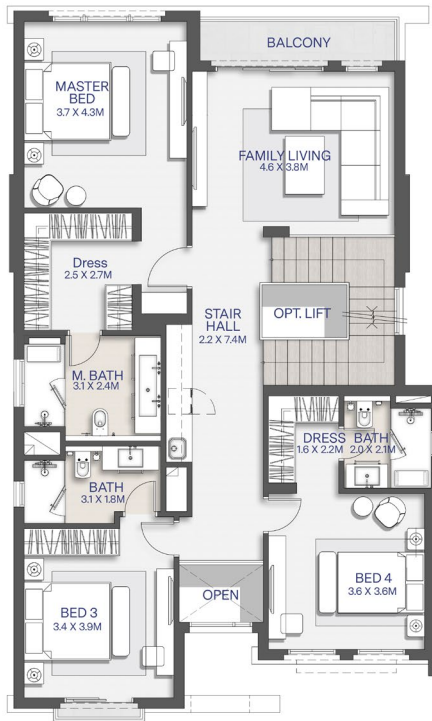
44 - 69

J.H.

FLOOR PLANS

# Villa-V36

First Area: 140 sqm

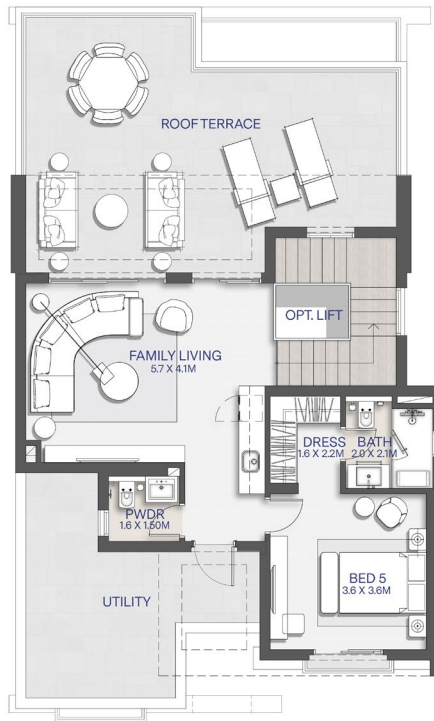


# FLOOR PLANS

## Villa-V36

Penthouse: 71 sqm

Roof Terrace: 67 sqm



FLOOR PLANS

# Villa-V22

Total Area: 289 m<sup>2</sup> + 59 m<sup>2</sup> Roof Terrace



47 - 69

J.H.

FLOOR PLANS

# Villa-V22

Total Area: 289 m<sup>2</sup> + 59 m<sup>2</sup> Roof Terrace



48 - 69

J.H.

# FLOOR PLANS

## Villa-V22

Ground Area: 115 sqm



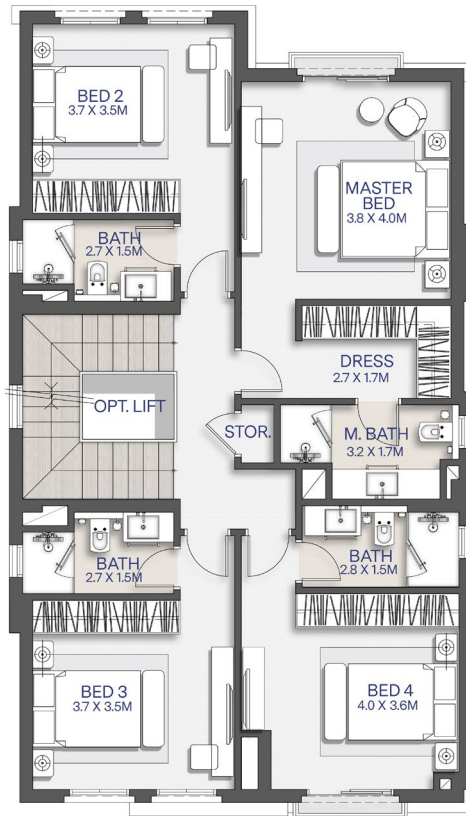
49 - 69

J.H.

FLOOR PLANS

# Villa-V22

First Area: 117 sqm

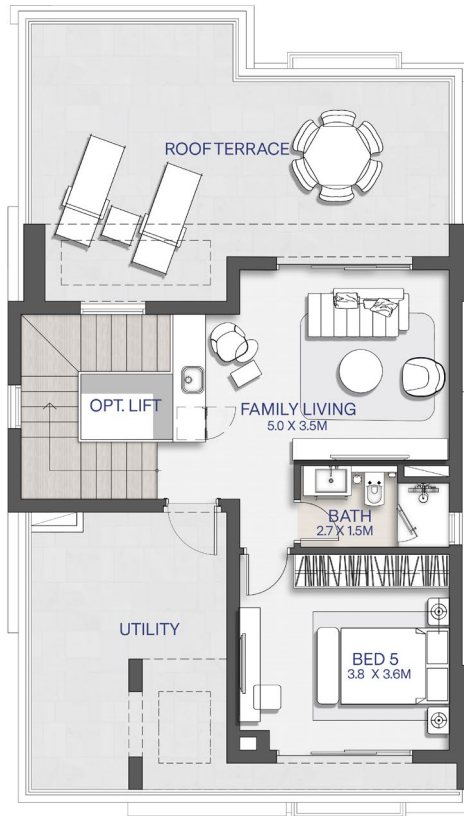


FLOOR PLANS

# Villa-V22

Penthouse: 57 sqm

Roof Terrace: 59 sqm



FLOOR PLANS

# Villa-V21

Total Area: 258 m<sup>2</sup> + 65 m<sup>2</sup> Roof Terrace



52 - 69

J.H.

FLOOR PLANS

# Villa-V21

Total Area: 258 m<sup>2</sup> + 65 m<sup>2</sup> Roof Terrace



53 - 69

J.H.

# FLOOR PLANS

## Villa-V21

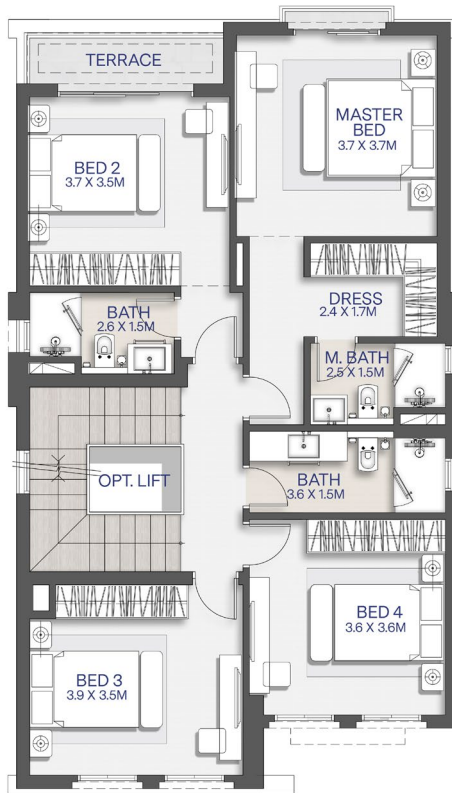
Ground Area: 108 sqm



FLOOR PLANS

# Villa-V21

First Area: 109 sqm

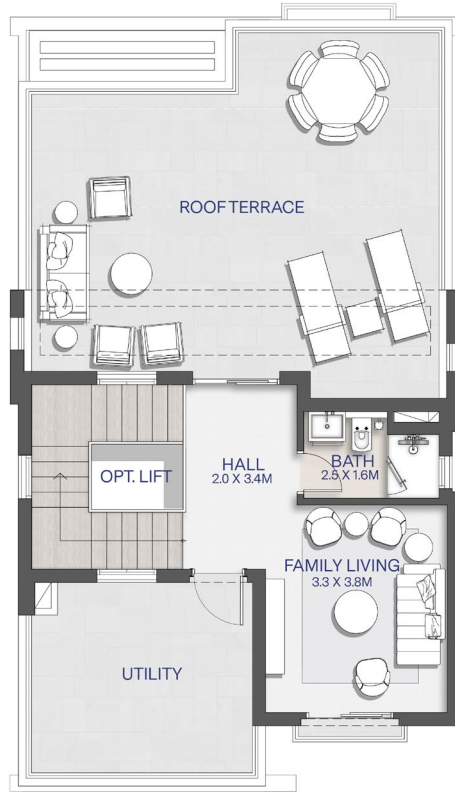


FLOOR PLANS

# Villa-V21

Penthouse: 41 sqm

Roof Terrace: 65 sqm



FLOOR PLANS

# Twin Villa-TV23 Unit E1

Total Area: 236 m<sup>2</sup> + 55 m<sup>2</sup> Roof Terrace



57 - 69

J.H.

FLOOR PLANS

# Twin Villa-TV23

Total Area: 236 m<sup>2</sup> + 55 m<sup>2</sup> Roof Terrace



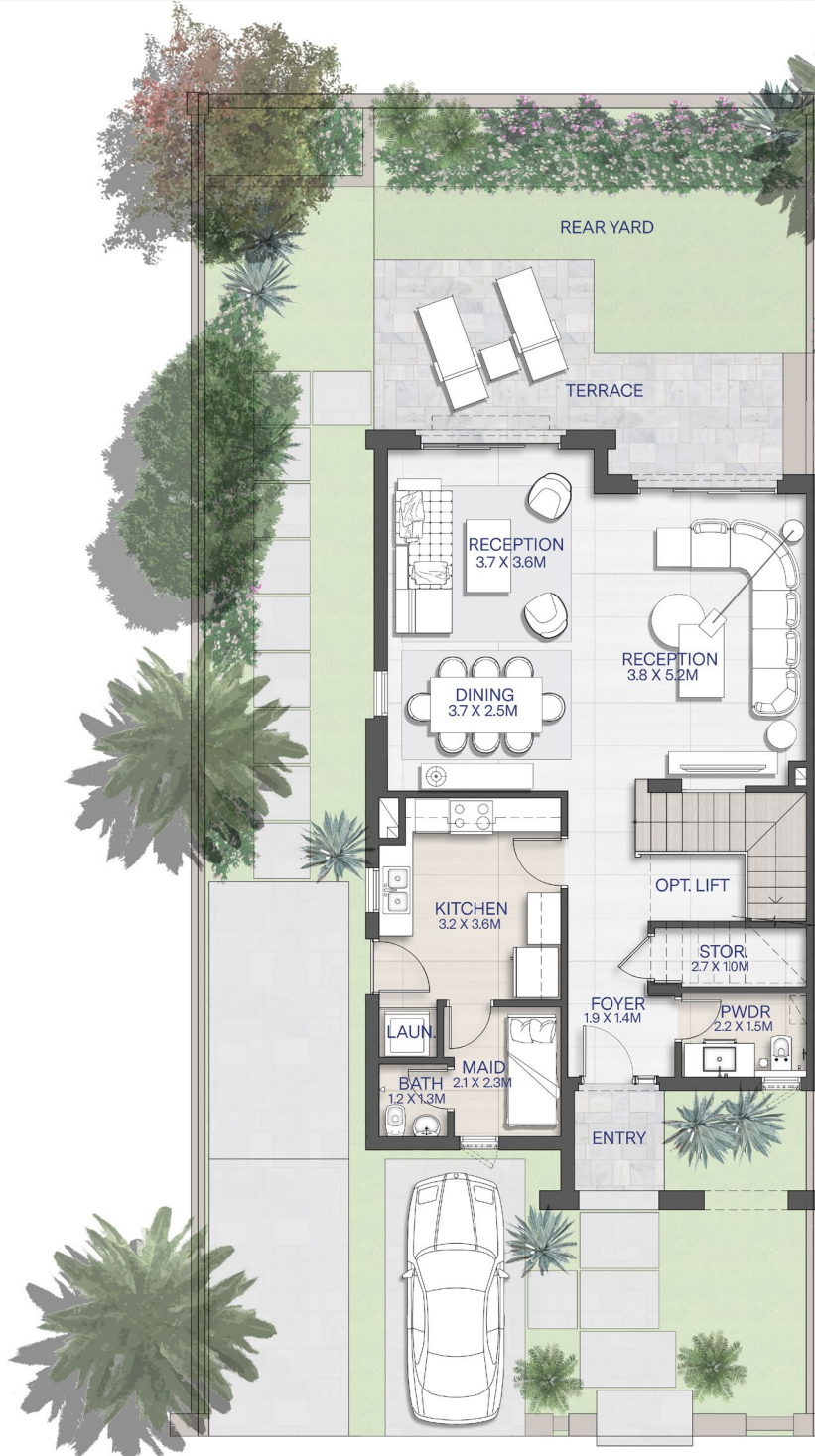
58 - 69

J.H.

FLOOR PLANS

# Twin Villa-TV23

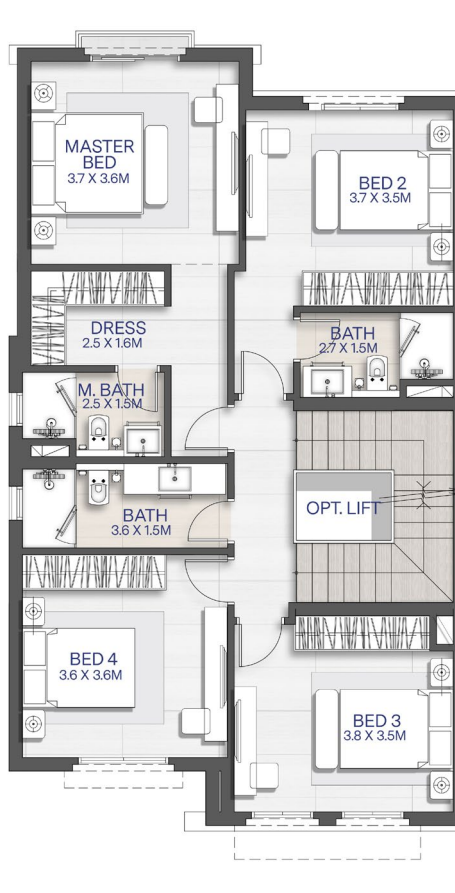
Ground Area: 95 sqm



FLOOR PLANS

# Twin Villa-TV23

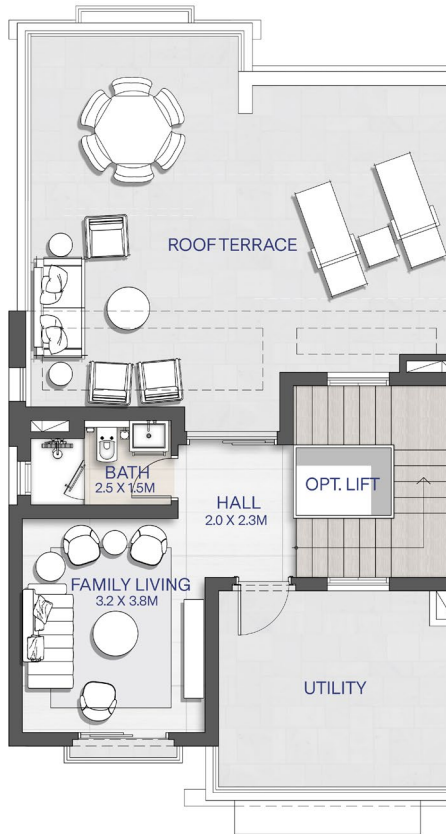
First Area: 103 sqm



FLOOR PLANS

# Twin Villa-TV23

Penthouse: 38 sqm - Roof Terrace: 55 sqm



# Town homes-TH22

Total Area: 218 m<sup>2</sup> + 55 m<sup>2</sup> Roof Terrace



62 - 69

J.H.

# Town homes-TH22

Total Area: 218 m<sup>2</sup> + 55 m<sup>2</sup> Roof Terrace



69 - 69

J.H.

FLOOR PLANS

# Town homes-TH22

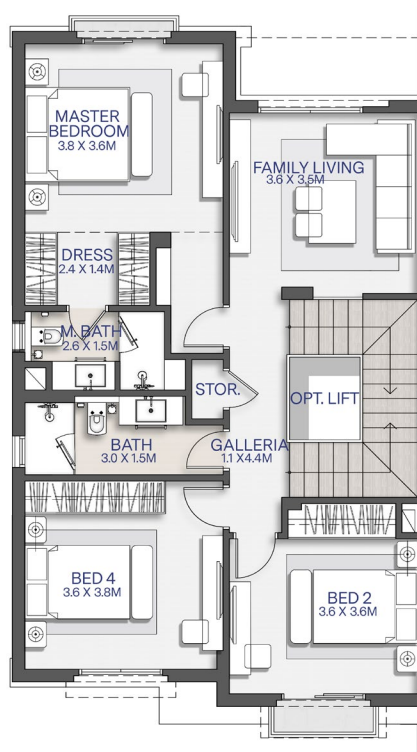
Ground Area: 86 sqm



FLOOR PLANS

# Town homes-TH22

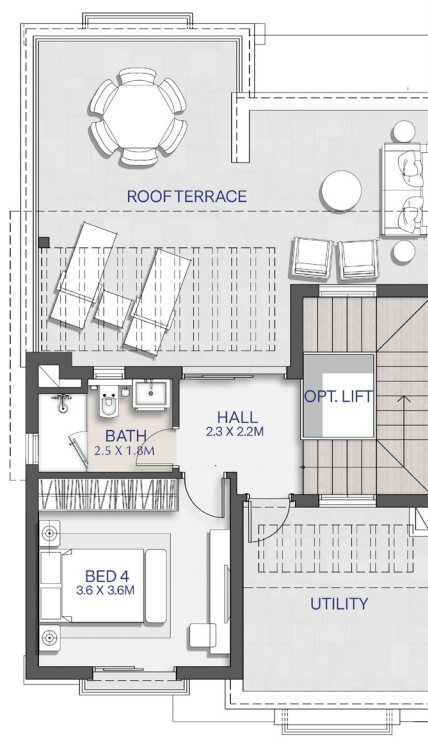
First Area: 94 sqm



FLOOR PLANS

# Town homes-TH22

Penthouse: 38 sqm - Roof Terrace: 55 sqm





EGYPT